



Erratum

Erratum to “Aggregation behaviour and binding properties of an L-lysine appended glycoluril receptor”
[Tetrahedron Letters 42 (2001) 2751–2753][†]

Beatriu Escuder,* Alan E. Rowan, Martinus C. Feiters and Roeland J. M. Nolte

Department of Organic Chemistry, University of Nijmegen, Toernooiveld 1, NL-6525 ED Nijmegen, The Netherlands

The publisher regrets that due to an error in the production process, Fig. 2 on page 2752 of the above paper was not correctly reproduced. The corrected version is shown below.

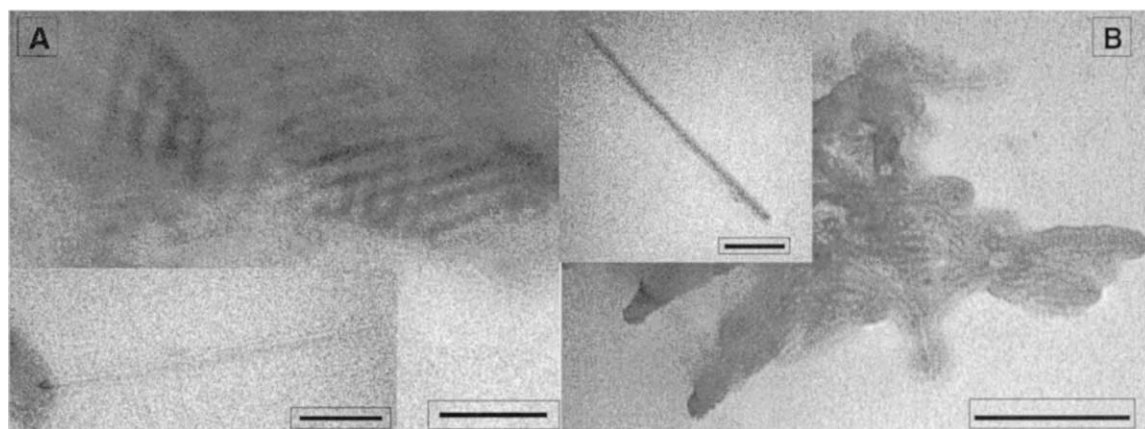


Figure 2. (A) Transmission electron micrographs of compound **2** in chloroform (Pt-shadowing, bars represent 100 nm). (B) *idem*, after addition of L-dopa (**4**) (Pt-shadowing, bars represent 200 nm).

* Corresponding author. Present address: Dep. Química Inorgànica i Orgànica, Universitat Jaume I, 12080 Castelló, Spain. E-mail: escuder@qio.uji.es

[†] PII of original article: S0040-4039(01)00297-0